



**MUFFETT**  
ENGINEERING SOLUTIONS

**PRECISION & EXCELLENCE**

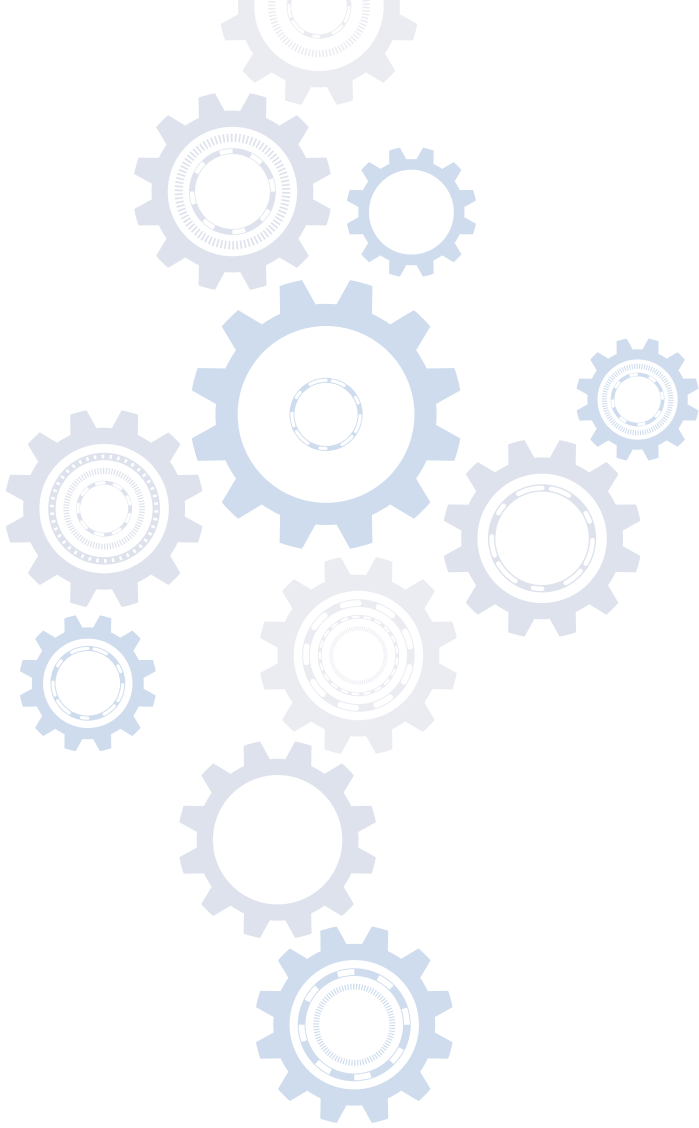
---

# BESPOKE GEARS FOR CRITICAL INDUSTRIES

- >> AEROSPACE
- >> MEDICAL
- >> OFF-HIGHWAY
- >> OIL & GAS
- >> AUTOMOTIVE

100 

CELEBRATING ONE HUNDRED YEARS



## >> INTRODUCTION

Based in Kent, Muffett Engineering Solutions offers businesses in a wide variety of industries the very best in precision-engineered gearing. We proudly supply to leading manufacturers in the UK, Europe and Asia, offering competitive prices and superior production facilities.

Established in 1920 we have brought the highest standards in precision engineering and assembly services for almost a century, focusing closely on investing in the very best people and equipment to ensure our clients receive exceptional customer service and quality standards that lead the market.

Currently in our third generation of family ownership we aim to work in a traditional manner that places quality products and service as our leading priorities. With a tight knit and long serving staff of over 50 team members we ensure high standards are maintained through ongoing training and a well established apprenticeship scheme which develops the key specialist skills our business requires on the plant floor.





## >> AEROSPACE

We manufacture precision gears, gearboxes and assembled components for plenty of suppliers in the aerospace industry.

We are an AS9100D accredited supplier, manufacturing parts found throughout the aircraft industry. We operate to the highest aerospace quality standard BS EN 9100:2018

### INCLUDING:

- Held AS9100 approval since 1993
- Actuation systems
- Environmental control systems
- High reduction gearing
- Gear pumps
- Planetary gear assemblies
- Locking systems





## >> MEDICAL

We manufacture electro-mechanical components and movable parts, and can provide full assembly services, including wiring and testing.

We have extensive experience serving the medical industry and provides precision-engineered parts for diverse applications such as artificial hands; medical scanners; parts for radiotherapy machines; collimator cancer-treatment machinery; and adjustable treatment couches.

### INCLUDING:

- Patient positioning
- Patient Imaging
- Electro mechanical assemblies
- Sub-assemblies
- Kits
- Worldwide supplier inc. Europe, America & Asia
- Process validation through PPAP.





## >> OFF-HIGHWAY

One of our many strengths is the manufacture of precision-engineered components such as drive shafts and gears used in off-highway machines, including crane winches and hydraulic systems on large earth moving equipment.

Our machines have the capacity to manufacture larger components with very impressive cycle times, ensuring our costs and lead times are very competitive.

### INCLUDING:

- Hydraulic pumps
- Timing gears
- Splined shafts
- Ground gear quality
- Ground shafts
- Export to Europe, America & Asia
- Process validation through PPAP.





## >> OIL & GAS

We supply to leading manufacturers in the oil and gas exploration industries, creating bespoke components for our clients.

We complete gear assemblies for hydraulic and hydrothermal Fracture Mapping and Vertical Seismic Profiling systems. We are especially proud of our specialist expertise in supplying pump gearboxes and valve control gear lines used in pumping and pipeline systems.

### INCLUDING:

- Planetary gearboxes
- High specification materials
- Pumps
- Gearbox testing
- Flow control
- Valves
- Process validation through PPAP.





## >> PLANT LIST

### MILL TURN LATHES

- Mill Turn Lathes
- 2 x Traub TNX65/42
- Mori Seiki NL2500 SY
- Doosan Puma 2600Y
- Turning Capacity
- Barfeed Capacity dia 75mm
- Chuck Capacity dia 400mm
- CMZ TTL-66-66-T1Y-T2Y
- CMZ TTL-66-66-T1Y-T2Y with GL20-11 3 axis gantry loader

### MILLING

- 2 x Mori Seiki NV5000 4 Axis
- 2 x Doosan DNM5700 4 Axis

### MILLING CAPACITY

- X-axis: 1050mm
- Y-axis: 570mm
- Z-axis: 510mm

### GRINDING

- Kellenberger 100 with Wenger autoloader
- Robbi Omicron CNC3260
- Studer S21
- Perfect D408 Surface Grinder
- J&S 1070 Cylindrical

### GRINDING CAPACITY

- Max. Dia. 250mm
- Max.Length 400mm, obtaining a surface finish of 0.15 Ra.

### GEAR MACHINING

- Koepfer HLC150
- Liehberr LC280
- Koepfer 160
- Gleason AM250
- Gleason Phoenix 125GH
- Monier MZ Thread Mill
- Koepfer 150 Hobber
- Sykes V400
- 3 x Sykes V4
- Mikron A24
- Mikron 102.5
- 2 x Gleason 3" bevel mc
- Mikron A60





On-going investment in the state of the art equipment provides our clients with unrivalled capacity potential.

It is fair to say that precision engineers are only ever as good as their products and plant capacity.

We hope the products speak for themselves and our 3,500 sq.m plant is packed with the very best in CNC turning, grinding, milling and gear cutting equipment together with a fully equipped Assembly Department.

## INSPECTION EQUIPMENT

- Mitutoyo Crysta-Apex S 9106 C.M.M with Full Gear pack
- Mitutoyo Contrace C3200
- Jenoptik Opicline C614 Vision Checking System
- Shadowgraph
- 3 x Laser Micrometers
- Bowers Micro Vickers Hardness Tester

## WORMS

- Max pitch 3 module/8DP
- Max OD 50mm

## WORM WHEELS

- Max pitch 3 module/8DP
- Max OD 150mm

## ADDITIONAL EQUIPMENT

- EDM
- Honing
- Broaching
- Fully equipped assembly department

## SPUR & HELICAL GEARS

- Max dia 400mm, max pitch 5 module/6DP
- Min dia 3mm, min pitch 0.2 module/120DP
- Max gear face width 250mm

## BEVEL GEARS

- Max pitch 2 module/12DP
- Min pitch 0.3 module/96DP
- Max cone distance 57mm/2.25"

## RACKS

- Max pitch 3 module/8DP
- Min pitch 0.2 module/120DP
- Max length 1000mm
- Max face width 100mm

## INTERNAL GEARS

- Max pitch 3 module/8DP
- Min pitch 0.3 module/96DP
- Max. face width 50mm / 2"



## >> OUR ACCREDITATIONS

We attract the most demanding and exacting clients by providing truly market leading service and quality in every product and gear we manufacture, from the best equipment to the best people when you work with Muffett you know you're getting faultless precision engineering.

Whatever your precision engineered gearing needs speak to the experts at Muffett Engineering Solutions; contact us today to speak with our expert team and see what we can bring to your next project. Our quality management system is fully compliant with, and accredited to both ISO 9001: 2015 and aerospace quality standard BS EN 9100: 2018.



Scan the QR code with your smartphone to view our certificate verification

# >> WORLDWIDE DISTRIBUTION



## >> FIND US

Ashdown House  
Lamberts Road  
North Farm Ind. Estate  
Tunbridge Wells  
Kent TN2 3EH

# 100



CELEBRATING ONE HUNDRED YEARS



# 100



CELEBRATING ONE HUNDRED YEARS



**MUFFETT**  
ENGINEERING SOLUTIONS

Telephone: 01892 542111 | Fax: 01892 542117

[sales@muffett.co.uk](mailto:sales@muffett.co.uk)

---

For more information, please visit our website

[WWW.MUFFETT.CO.UK](http://WWW.MUFFETT.CO.UK)